

invo

LIPOSUCTION GARMENTS



LEARN MORE AT OUR WEBSITE

www.aurasaglik.com

invo

LIPOSUCTION GARMENTS



PRODUCT LIST

LC 100 Abdominal supporters with straps

LC 120 Girdle with abdominal extension above the knee

LC 140 Girdle with abdominal extension below the knee

LC 160 Ankle length girdle with abdominal extension

LC 200 Abdominal support with extended back

LC 202 Girdle with abdominal and back extension mid thigh

LC 204 Girdle with abdominal and back extension above the knee

LC 206 Girdle with abdominal and back extension below the knee

LC 208 Ankle length girdle with abdominal

LC 210 Girdle with abdominal and back extension mid thigh

LC 220 Girdle with abdominal and back extension above the knee

LC 240 Girdle with abdominal and back extension below the knee

LC 260 Ankle length girdle with abdominal

LC 300 Above the knee girdle

LC 320 Below the knee girdle

LC 340 Ankle length girdle

LC 305 Above the knee girdle

LC 325 Below the knee girdle

LC 345 Ankle length girdle

LC 400 Classic full body shaper

LC 402 Classic full body shaper under breast

LC 405 Above the knee full body shaper

LC 410 Below the knee full body shaper

LC 420 Ankle length full body shaper

LC 430 Above the knee full body shaper

LC 440 Below the knee full body shaper

LC 450 Ankle length full body shaper

LC 500 Male vest

LC 510 Male vest short

LC 520 Male body shaper

LC 525 Male body shaper with front closure

LC 540 Male above the knee body shaper

LC 550 Male below the knee body shaper

LC 560 Male above the knee body shaper with short sleeves

LC 565 Male below the knee body shaper with short sleeves

LC 610 Bra with zipper

LC 620 Bra with straps

LC 625 Bra with zipper (shoulder straps)

LC 640 Bra with chest band

LC 645 Bra with zipper (chest band and shoulder velcro)

LC 650 Bra with zipper (shoulder velcro)

LC 670 Cotton bra with zipper (beige)

LC 680 Cotton bra with zipper (black)

LC 690 Bra with zipper

LC 660 Chest band

LC 700 Face band

LC 710 Ear protective bandage

LC 720 Facial chinneck bandage

LC 800 Female liposuction vest

LC 805 Female short liposuction vest

LC 810 Compression sleeves with front closures (under breast)

LC 815 Compression sleeves with front closures (top breast)

LC 820 Sleeves for liposuction

LC 1000 hidef male foam vest

LC 2000 hidef female foam vest

LC 3000 waist shaper

LC 3010 waist shaper with shoulder strap

AB019 ABDOMINAL BINDER THORAX (WIDTH 19 CM)

AB025 ABDOMINAL BINDER (WIDTH 25 CM)

AB220 KNITTED ABDOMINAL BINDER (WIDTH 22 CM)

AB230 KNITTED ABDOMINAL BINDER (WIDTH 30 CM)

AB3P THREE PANEL ABDOMINAL BINDER

AB4P FOUR PANEL ABDOMINAL BINDER

F 200 Compression foam

F 300 Fabric covered gynecomastia foam

F 400 Fabric covered abdominal foam

F 450 Fabric cover abdominal foam with back supported

F 500 BACK BOARD

F 600 Fabric covered abdominal board

F 700 ABDOMINAL BOARD

B 100 BBL pillow XL

B 200 BBL pillowV



invo

LIPOSUCTION GARMENTS



LC 100



DETAIL



LC 100

ABDOMINAL
SUPPORTERS WITH
STRAPS

Recommended for the postoperative
period following abdominal and flank liposuction.
Front fastening with hookandeye closures.

invo
LIPOSUCTION GARMENTS

LC 120

DETAIL



LC 120

GIRDLE WITH
ABDOMINAL EXTENSION
ABOVE THE KNEE

Recommended for the postoperative period following abdominal, trochanter, and thigh liposuction. Front fastening with hookandeye closures. Open crotch area.



invo
LIPOSUCTION GARMENTS

LC 140



DETAIL



LC 140

GIRDLE WITH
ABDOMINAL EXTENSION
BELOW THE KNEE

Recommended for the postoperative period following
abdominal, trochanter, thigh and knee liposuction.
Front fastening with hookandeye closures. Open crotch area.

invo
LIPOSUCTION GARMENTS

LC 160

DETAIL



LC 160

ANKLE LENGTH
GIRDLE WITH ABDOMINAL
EXTENSION

Recommended for the postoperative period following abdominal, trochanter, and whole legs (to ankles) liposuction. Front fastening with hookandeye closures. Open crotch area.

invo
LIPOSUCTION GARMENTS

LC 200



DETAIL



LC 200

ABDOMINAL SUPPORT
WITH EXTENDED
BACK

Recommended for the postoperative period following
abdominal, flank and back liposuction.
Front fastening with hookandeye closures.

invo

LIPOSUCTION GARMENTS

DETAIL



LC 202

GIRDLE WITH ABDOMINAL
AND BACK EXTENSION
MID THIGH

Recommended for the postoperative period following
abdominal, trochanter, mid thigh and back liposuction.
Front fastening with hookandeye closures. Open crotch area.

LC 204



DETAIL



LC 204

GIRDLE WITH ABDOMINAL
AND BACK EXTENSION
ABOVE THE KNEE

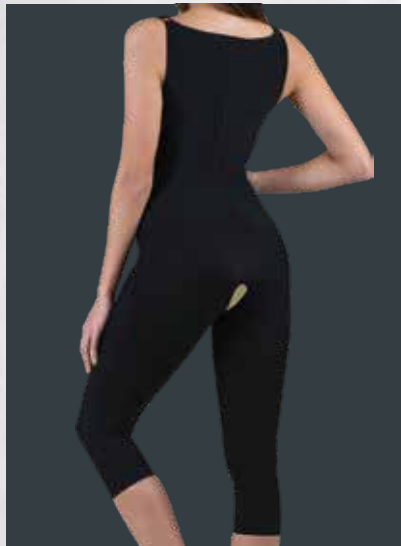
Recommended for the postoperative period following abdominal, trochanter, thigh and back liposuction. Front fastening with hookandeye closures. Open crotch area.

invo

LIPOSUCTION GARMENTS

LC 206

DETAIL



LC 206

GIRDLE WITH ABDOMINAL
AND BACK EXTENSION
BELOW THE KNEE

Recommended for the postoperative period following abdominal, trochanter, thigh, knee and back liposuction. Front fastening with hook-and-eye closures. Open crotch area.

invo
LIPOSUCTION GARMENTS

LC 208



DETAIL



LC 208

ANKLE LENGTH
GIRDLE WITH
ABDOMINAL

Recommended for the postoperative period following abdominal, trochanter, thigh, knee, ankle and back liposuction. Front fastening with hookandeye closures. Open crotch area.



invo

LIPOSUCTION GARMENTS



LC 210



DETAIL

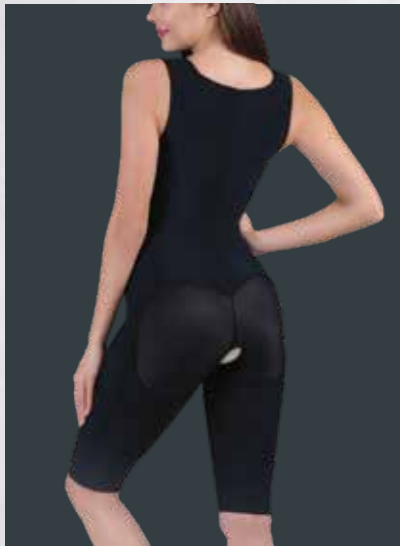


LC 210

GIRDLE WITH
ABDOMINAL AND BACK
EXTENSION MID THIGH

Recommended for the postoperative period following abdominal, trochanter, mid thigh and back liposuction. Also suitable for fat transfer (BBL) operations. Front fastening with hook-and-eye closures. Open crotch area.

DETAIL



LC 220

GIRDLE WITH ABDOMINAL
AND BACK EXTENSION
ABOVE THE KNEE

Recommended for the postoperative period following abdominal, trochanter, thigh and back liposuction. Also suitable for fat transfer (BBL) operations. Front fastening with hook-and-eye closures. Open crotch area.

LC 240



DETAIL



LC 240

GIRDLE WITH ABDOMINAL
AND BACK EXTENSION
BELOW THE KNEE

Recommended for the postoperative period following abdominal, trochanter, thigh, knee and back liposuction. Also suitable for fat transfer (BBL) operations.
Front fastening with hook-and-eye closures. Open crotch area.

DETAIL



LC 260

ANKLE LENGTH GIRDLE
WITH ABDOMINAL

Recommended for the postoperative period following abdominal, trochanter, thigh, knee, ankle and back liposuction. Also suitable for fat transfer (BBL) operations. Front fastening with hook-and-eye closures. Open crotch area.

LC 300



DETAIL



LC 300

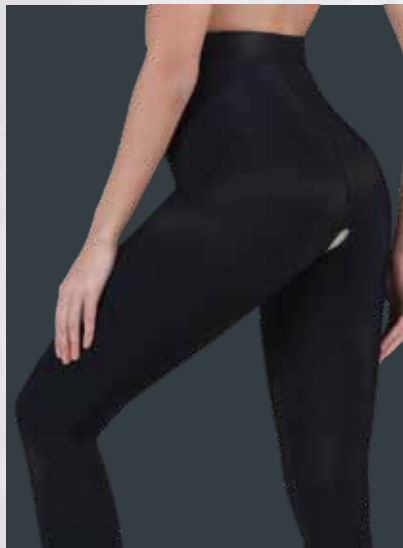
ABOVE THE KNEE
GIRDLE

Recommended for the post-operative period following trochanter and thigh liposuction. Front fastening with hook-and-eye closures. Open crotch area.

invo
LIPOSUCTION GARMENTS

LC 320

DETAIL



LC 320

BELOW THE KNEE GIRDLE

Recommended for the post-operative period following trochanter, thigh and knee liposuction. Front fastening with hook-and-eye closures. Open crotch area.

invo
LIPOSUCTION GARMENTS

LC 340



DETAIL



LC 340

ANKLE LENGTH
GIRDLE

Recommended for the postoperative period following abdominal, trochanter, thigh and back liposuction. Front fastening with hookandeye closures. Open crotch area.

invo
LIPOSUCTION GARMENTS



invo

LIPOSUCTION GARMENTS



LC 305



DETAIL



LC 305

ABOVE THE KNEE
GIRDLE

Recommended for the post-operative period following trochanter and thigh liposuction. Front fastening with hook-and-eye closures. Also suitable for fat transfer (BBL) operations. Open crotch area.

invo

LIPOSUCTION GARMENTS

LC 325

DETAIL



LC 325

BELOW THE KNEE GIRDLE

Recommended for the post-operative period following trochanter, thigh and knee liposuction. Front fastening with hook-and-eye closures. Also suitable for fat transfer (BBL) operations. Open crotch area.

invo
LIPOSUCTION GARMENTS

LC 345



DETAIL



LC 345

ANKLE LENGTH
GIRDLE

Recommended for the postoperative period following trochanter and whole legs (to ankle) liposuction. Also suitable for fat transfer (BBL) operations. Front fastening with hook-and-eye closures. Open crotch area.



invo

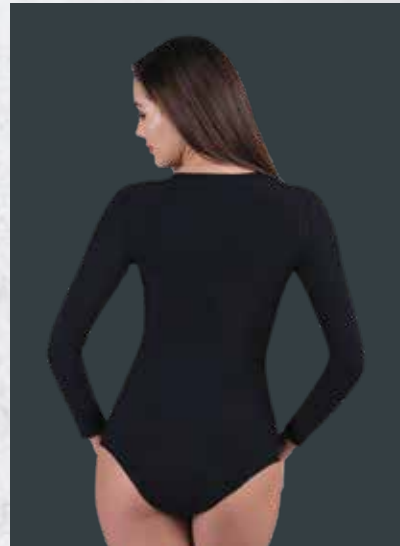
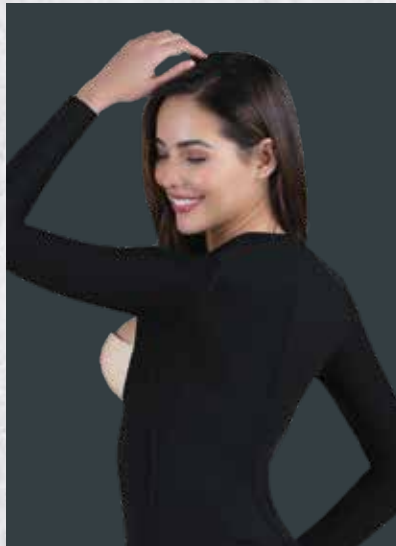
LIPOSUCTION GARMENTS



LC 402



DETAIL



LC 402

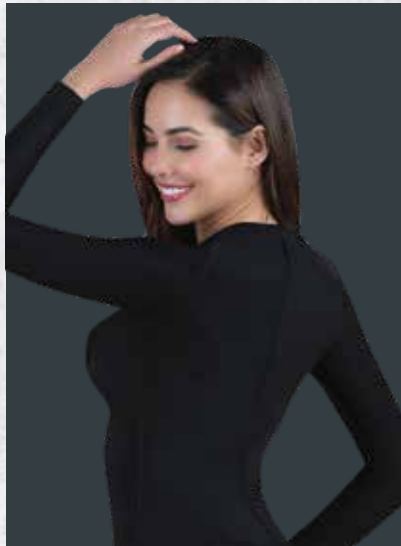
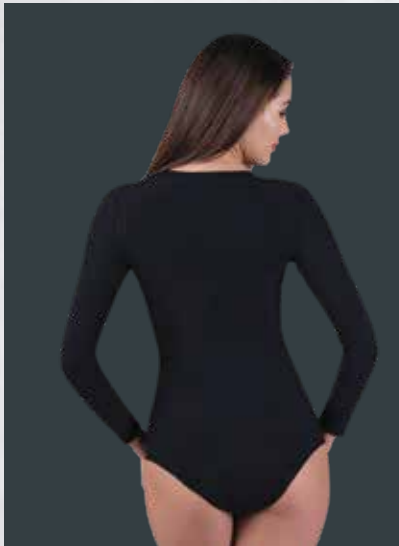
CLASSIC FULL BODY
SHAPER UNDER BREAST

Recommended for the postoperative period following
abdominal, flank, back area, and arm liposuction.
Front fastening with hook-and-eye closures.

invo
LIPOSUCTION GARMENTS

LC 400

DETAIL



LC 400

CLASSIC FULL BODY SHAPER

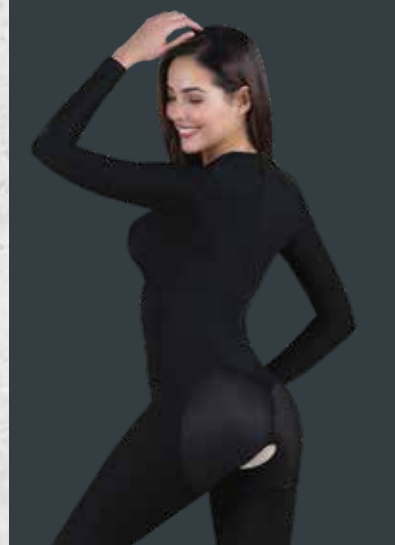
Recommended for the postoperative period following abdominal, flank, back area, and arm liposuction. Also suitable for breast surgery operations. Front fastening with hook-and-eye closures.

invo
LIPOSUCTION GARMENTS

LC 405



DETAIL



LC 405

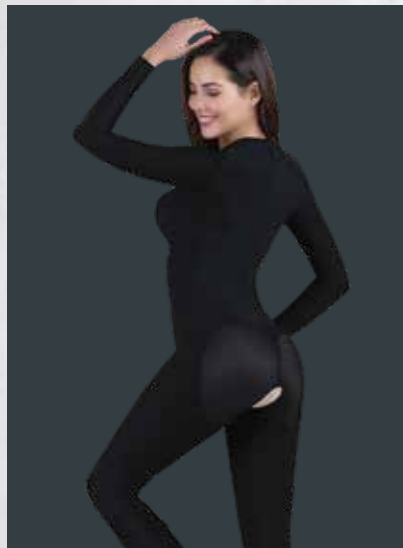
ABOVE THE KNEE
FULL BODY SHAPER

Recommended for the postoperative period following abdominal, trochanter, thigh, arm and back area liposuction. Also suitable for breast surgery operations. Front fastening with hook-and-eye closures. Open crotch area.

invo
LIPOSUCTION GARMENTS

LC 410

DETAIL



LC 410

BELOW THE KNEE FULL BODY SHAPER

Recommended for the postoperative period following abdominal, trochanter, thigh, knee, arm and back area liposuction. Also suitable for breast surgery operations. Front fastening with hook-and-eye closures. Open crotch area.

invo
LIPOSUCTION GARMENTS

LC 420



DETAIL



LC 420

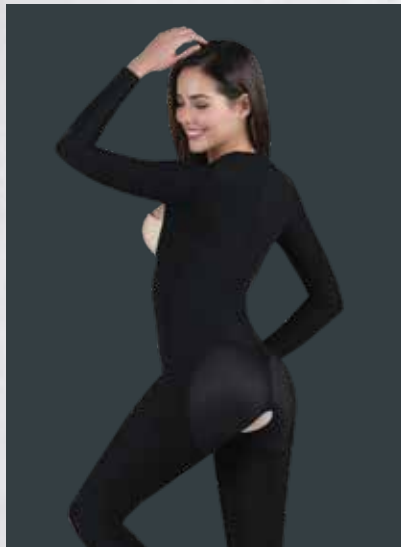
ANKLE LENGTH
FULL BODY SHAPER

Recommended for the postoperative period following abdominal, whole legs (to ankle), arm and back area liposuction. Also suitable for breast surgery operations. Front fastening with hook-and-eye closures. Open crotch area.

invo
LIPOSUCTION GARMENTS

LC 430

DETAIL



LC 430

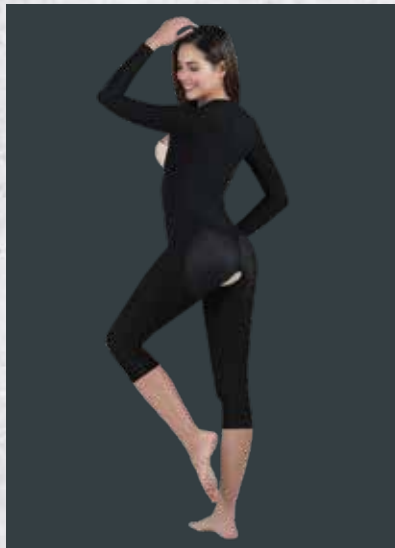
ABOVE THE KNEE FULL BODY SHAPER

Recommended for the postoperative period following abdominal, trochanter, thigh, arm and back area liposuction. Also suitable for fat transfer (BBL) operations. Front fastening with hook-and-eye closures. Open crotch area.

LC 440



DETAIL



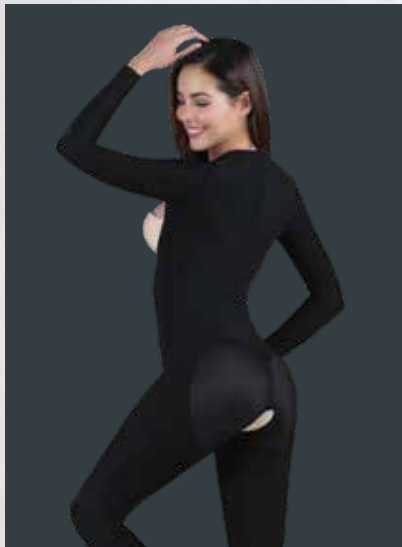
LC 440

BELOW THE KNEE
FULL BODY SHAPER

Recommended for the postoperative period following abdominal, trochanter, thigh, arm and back area liposuction. Also suitable for fat transfer (BBL) operations. Front fastening with hook-and-eye closures. Open crotch area.

LC 450

DETAIL



LC 450

ANKLE LENGTH FULL BODY SHAPER

Recommended for the postoperative period following abdominal, whole legs (to ankle), arm and back area liposuction. Also suitable for fat transfer (BBL) operations. Front fastening with hook-and-eye closures. Open crotch area.

invo

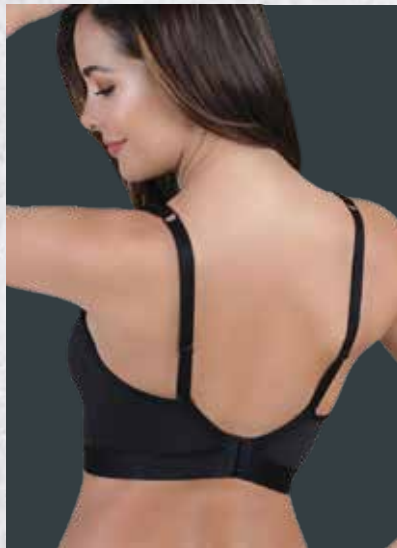
LIPOSUCTION GARMENTS



LC 610



DETAIL



LC 610 BRA WITH ZIPPER

Recommended for the postoperative period following
breast augmentation or reduction surgery.

LC 620

DETAIL



LC 620

BRA WITH ZIPPER

Recommended for the postoperative period following breast augmentation or reduction surgery.

invo
LIPOSUCTION GARMENTS

LC 625



DETAIL



LC 625

BRA WITH ZIPPER
(SHOULDER STRAPS)

Recommended for the postoperative period following
breast augmentation or reduction surgery.

invo

LIPOSUCTION GARMENTS

LC 640

DETAIL



LC 640

BRA WITH
CHEST BAND

Recommended for the postoperative period following
breast augmentation or reduction surgery.

invo
LIPOSLICTION GARMENTS

LC 645



DETAIL



LC 645

BRA WITH ZIPPER
(CHEST BAND AND SHOULDER VELCRO)

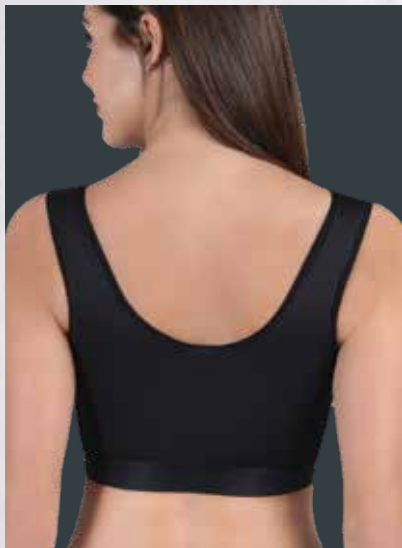
Recommended for the postoperative period following
breast augmentation or reduction surgery.

invo

LIPOSUCTION GARMENTS

LC 650

DETAIL



LC 650

BRA WITH ZIPPER
(SHOULDER VELCRO)

Recommended for the postoperative period following
breast augmentation or reduction surgery.

invo
LIPOSUCTION GARMENTS

LC 670



DETAIL



LC 670

COTTON BRA
WITH ZIPPER (BEIGE)

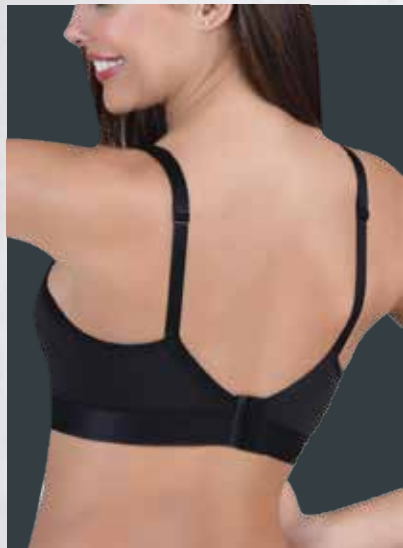
Recommended for the postoperative period following
breast augmentation or reduction surgery.

invo

LIPOSUCTION GARMENTS

LC 680

DETAIL



LC 680

COTTON BRA
WITH ZIPPER (BLACK)

Recommended for the postoperative period following
breast augmentation or reduction surgery.

invo
LIPOSECTION GARMENTS

LC 690



DETAIL



LC 690

BRA WITH ZIPPER

Recommended for the postoperative period following
breast augmentation or reduction surgery.

invo

LIPOSUCTION GARMENTS

LC 660

DETAIL



LC 660

BRA WITH ZIPPER

Recommended for the postoperative period following breast augmentation or reduction surgery.

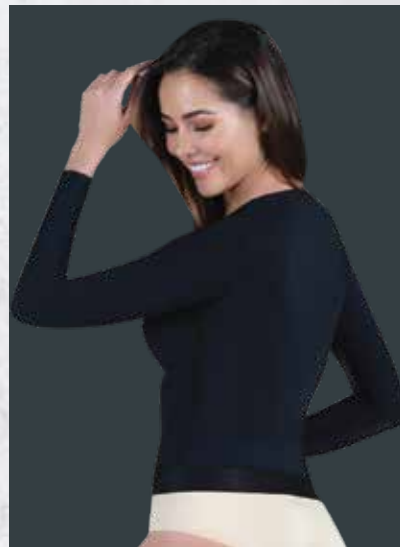


invo
LIPOSUCTION GARMENTS

LC 800



DETAIL



LC 800

FEMALE LIPOSUCTION
VEST

Recommended for the postoperative period following arm and back liposuction. Front fastening with hook-and-eye closures.

invo
LIPOSUCTION GARMENTS

LC 805

DETAIL



LC 805

FEMALE SHORT LIPOSUCTION VEST

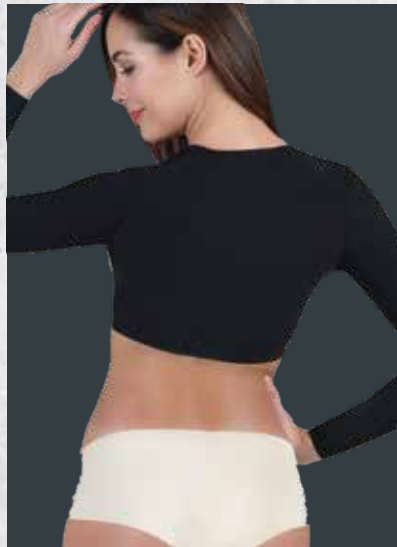
Recommended for the postoperative period following arm and back liposuction. Front fastening with hook-and-eye closures.

invo
LIPOSUCTION GARMENTS

LC 810



DETAIL



LC 810

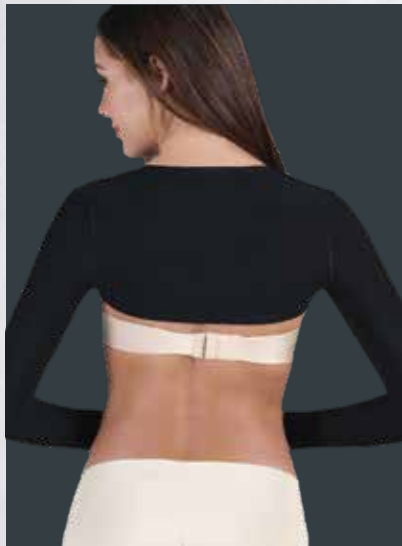
COMPRESSION SLEEVES
WITH FRONT CLOSURES
(UNDER BREAST)

Recommended for the postoperative period following
arm liposuction.

invo
LIPOSUCTION GARMENTS

LC 815

DETAIL



LC 815

COMPRESSION SLEEVES WITH FRONT CLOSURES (TOP BREAST)

Recommended for the postoperative period
following arm liposuction.

invo
LIPOSUCTION GARMENTS

LC 820



DETAIL



LC 820

SLEEVES FOR
LIPOSUCTION

Recommended for the postoperative period
following arm liposuction.

invo
LIPOSUCTION GARMENTS

invo

LIPOSUCTION GARMENTS



LC 500



DETAIL



LC 500

MALE VEST

Male sleeveless vest suitable for the postoperative period following gynecomastia surgery. Front fastening with hook-and-eye closures.

LC 510

DETAIL



LC 510

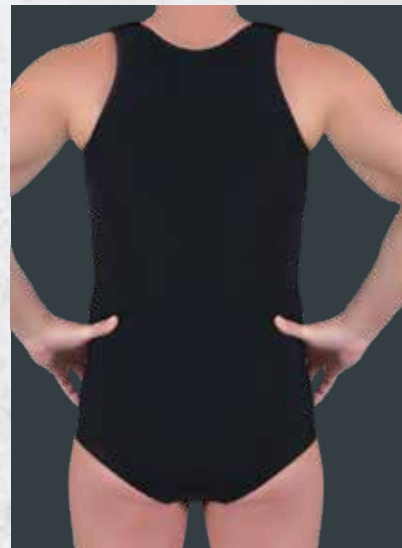
MALE VEST
SHORT

Male sleeveless vest suitable for the postoperative period following gynecomastia surgery.
Front fastening with hook-and-eye closures.

invo
LIPOSUCTION GARMENTS

LC 520

DETAIL



LC 520

MALE BODY
SHAPER

Ideal for the postoperative period following combined
chest and abdominal surgery.

invo
LIPOSUCTION GARMENTS

LC 525

DETAIL



LC 525

MALE BODY
SHAPER WITH
FRONT CLOSURE

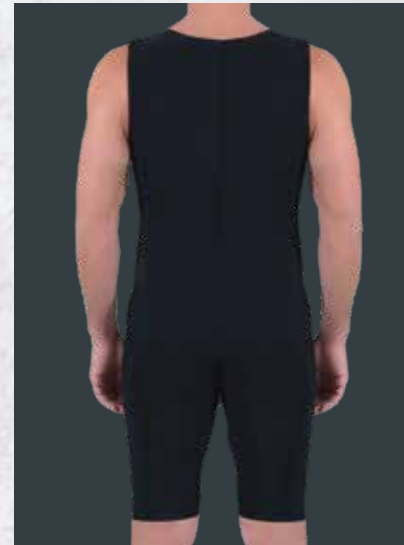
Ideal for the postoperative period following
combined chest and abdominal surgery.
Front fastening with hook-and-eye closures.

invo
LIPOSUCTION GARMENTS

LC 540



DETAIL



LC 540

MALE ABOVE
THE KNEE
BODY SHAPER

Recommended for the postoperative period following combined chest, abdomen, and thigh surgery. Front fastening with hook-and-eye closures. Open crotch area.

invo
LIPOSUCTION GARMENTS

LC 550

DETAIL



LC 550

MALE BELOW THE KNEE BODY SHAPER

Recommended for the postoperative period following combined chest, abdomen, thigh and knee surgery. Front fastening with hook-and-eye closures. Open crotch area.

invo
LIPOSLICTION GARMENTS

LC 560

DETAIL



LC 560

MALE ABOVE THE KNEE
BODY SHAPER WITH
SHORT SLEEVES

Recommended for the postoperative period following combined arms, chest, abdomen, and thigh surgery. Front fastening with hook-and-eye closures. Open crotch area.

invo
LIPOSUCTION GARMENTS

LC 565

DETAIL



LC 565

MALE BELOW THE KNEE
BODY SHAPER WITH
SHORT SLEEVES

Recommended for the postoperative period following combined arms, chest, abdomen, thigh and knee surgery. Front fastening with hook-and-eye closures. Open crotch area.

invo
LIPOSUCTION GARMENTS

LC 1000



DETAIL



LC 1000

HI-DEF MALE
FOAM VEST

Designed for the vaser lipo operations.

invo
LIPOSUCTION GARMENTS

DETAIL



LC 2000

HI-DEF FEMALE
FOAM VEST

Designed for the vaser lipo operations.



LC 3000



DETAIL



LC 3000

WAIST SHAPER

This waist shaper controls abdominal and flank volume, leaving a sculpted waist. It also offers a high lumbar support that helps relieve back pain, thanks to its posterior rods and tissue elasticity.

The garment is laminated in the abdominal area and has spiral steel rods located on the front and back, adding support and maintaining the natural movement of the body.

invo

LIPOSUCTION GARMENTS

LC 3010

DETAIL



LC 3010

WAIST SHAPER WITH SHOULDER STRAP

This waist shaper controls abdominal and flank volume, leaving a sculpted waist. It also offers a high lumbar support that helps relieve back pain, thanks to its posterior rods and tissue elasticity. The garment is laminated in the abdominal area and has spiral steel rods located on the front and back, adding support and maintaining the natural movement of the body.

invo
LIPOUSUCTION GARMENTS

AB 019



DETAIL



AB 019

ABDOMINAL BINDER
THORAX (WIDTH 19 CM)

Recommended for the postoperative period
following gynecomastia surgery.

invo

LIPOSUCTION GARMENTS

AB 025

DETAIL



AB 025

ABDOMINAL BINDER
(WIDTH 25 CM)

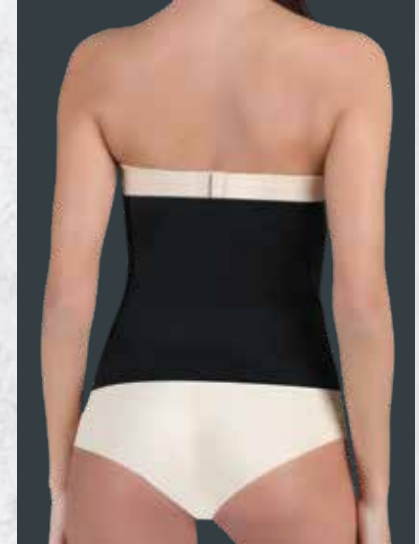
Recommended for the postoperative period
following abdominal surgery.

invo
LIPRODUCTION GARMENTS

AB 220



DETAIL



AB 220

KNITTED ABDOMINAL
BINDER (WIDTH 22 CM)

Recommended for the postoperative period
following abdominal surgery.

invo
LIPOSUCTION GARMENTS

AB 230

DETAIL



AB 230

KNITTED ABDOMINAL
BINDER (WIDTH 30 CM)

Recommended for the postoperative period
following abdominal surgery.



invo
LIPRODUCTION GARMENTS

AB 3P



DETAIL



AB 3P

THREE PANEL
ABDOMINAL BINDER

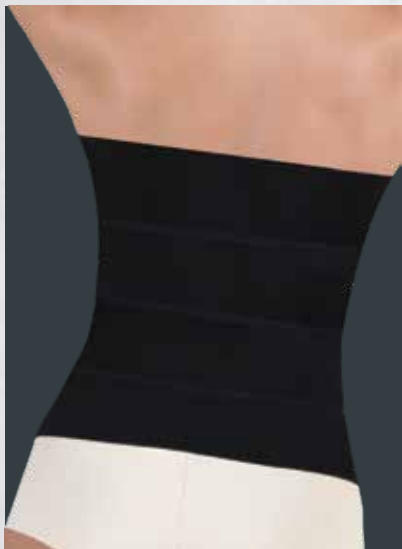
Recommended for the postoperative period
following abdominal surgery.

invo

LIPOSUCTION GARMENTS

AB 4P

DETAIL



AB 4P

FOUR PANEL
ABDOMINAL BINDER

Recommended for the postoperative period
following abdominal surgery.



invo
LIPOSUCTION GARMENTS



LC 700

FACE BAND

Suitable for use in the postoperative period following face lifts, chin liposuction, otoplasty and maxillofacial surgery.

LC 710

EAR PROTECTIVE BANDAGE

LC 720

FACIAL CHIN-NECK BANDAGE

Facial bandage is recommended for the postoperative period, following face lifts and chin area liposuction.

invo

LIPOSUCTION GARMENTS



F 200



F 200

COMPRESSION FOAM

F 300



F 300

FABRIC COVERED
GYNECOMASTIA FOAM

Recommended for the postoperative period
following gynecomastia surgery.

F 400

F 400

FABRIC COVERED
ABDOMINAL FOAM

F 450

FABRIC COVER
ABDOMINAL FOAM WITH
BACK SUPPORTED



F 450



invo

LIPOSUCTION GARMENTS

Recommended for
the postoperative period
following abdominoplasty surgery.

invo

F 500



F 500 BACK BOARD

Lumbar foam mold compression for post-surgical use, an excellent complement for recovery after an aesthetic procedure, prevents fluid retention in the lower back area.

invo
LIPOSUCTION GARMENTS

F 600



F 600

FABRIC COVERED
ABDOMINAL BOARD

Recommended for the postoperative period
following abdominoplasty surgery.



invo
LIPRODUCTION GARMENTS

F 700



F 700

ABDOMINAL BOARD

Anatomic abdominal molder for daily and post-surgical use, an excellent complement for recovery after undergoing an aesthetic or surgical procedure in the abdomen. It includes rapid drying technology and antibacterial fabric that reduces the risk of infections and bad odors.

invo

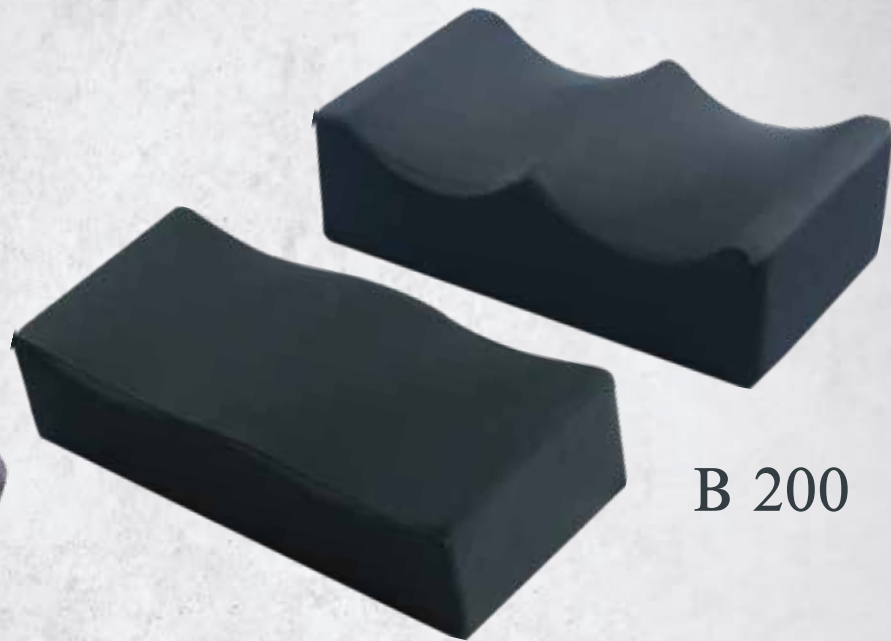
LIPOSUCTION GARMENTS

invo

LIPOSUCTION GARMENTS



B 100
B 200



B 200

B 100

B 100 - BBL PILLOW (XL)

B-200 - BBL PILLOW

P 100



P 100

BUFFER PIEZ FOR WOMEN

invo
LIPOSUCTION GARMENTS



INFORMATION TO TRIM THE **invo** FUNNEL

Anatomical / Shaped Implant +2cm larger

Smooth Round

Moderate&Moderate Plus : as shown

High Profile: +0.5cm larger

Ultra High Profile: +1cm larger

Textured Round

Moderate&Moderate Plus : +1.5cm larger

High Profile: +2cm larger

Ultra High Profile: +2cm larger

F 200

SINGLE USE, STERILE INSTRUMENT
FOR THE DELIVERY OF GEL IMPLANTS.

SIZE CHART

Size	3XS	2XS	XS	S	M	L	XL	2XL	3XL	4XL
Arm	20-22 CM	22-24 CM	24-26 CM	26-27 CM	27-29 CM	29-30 CM	30-33 CM	33-36 CM	36-40 CM	40-44 CM
Bust	71-76 CM	76-81 CM	81-86 CM	86-91 CM	91-97 CM	97-102 CM	102-109 CM	109-119 CM	119-130 CM	130-140 CM
Under Bust	52-58 CM	58-64 CM	64-69 CM	69-74 CM	74-79 CM	79-84 CM	84-91 CM	91-102 CM	102-112 CM	112-122 CM
Waist	51-56 CM	56-61 CM	61-66 CM	66-71 CM	71-76 CM	76-81 CM	81-89 CM	89-99 CM	99-109 CM	109-119 CM
Hip	76-81 CM	81-86 CM	86-91 CM	91-97 CM	97-102 CM	102-107 CM	107-114 CM	114-124 CM	124-135 CM	135-145 CM
Thigh	40-44 CM	44-48 CM	48-51 CM	51-54 CM	54-57 CM	57-60 CM	60-65 CM	65-70 CM	70-77 CM	77-86 CM

invo

invo

LIPOSUCTION GARMENTS

AURA SAĞLIK HİZMETLERİ

H.Rıfat Paşa Mah. Yuzer Havuz Sk.1B No:56 34384 Şişli / İst. + 90 (212) 220 67 47

info@aurasaglik.com www.aurasaglik.com